

MESSAGE FROM RANDY



Change is in the air following a long presidential campaign season and the election of a new administration. As with the construction industry that weathered the recession and uncertainty of the market, and today stands firm, we hope for that same resolve going forward, regardless of what side of the aisle you stand.

On a lighter note, a recent project we're proud of is a large county courthouse in Litchfield Connecticut brought in by Suzanne Kolb of Hartford, which involves all of the flooring and wall tile. This magnificent facility has domestic carpet tile, and ceramic tile and stone being sourced offshore. Another test in our logistics capability.

And speaking of logistics capabilities, the new addition to my face requires a bit more logistics than I imagined, but with the cooler weather I thought I'd try and fit the face to the season so to speak. Another maintenance project!

This fall we hope the change in both the air and the political climate finds you hopeful and ready to meet any challenges that lay ahead.

Randy

NEW FRANCHISE SOLID



CONCRETE



STONE



TERRAZZO



METAL



COATINGS



REPAIR

An exciting opportunity has come our way that leverages our maintenance program even further. SOLID is network of artisans, craftsman and overall "solutionists" experienced in environmentally-safe floor maintenance and restoration. With SOLID we bring a high level maintenance for concrete, stone, terrazzo, and metal.

Concrete

Concrete need proper maintenance to to prevent serious damage. SOLID performs restoration overnight without any disruption to your work environment - at no extra cost.

Stone

Stone is a big investment and SOLID maintenance, protects and extends the life of that investment.

Terrazzo

The original recycled flooring from centuries ago when scraps of marble was mixed with leftover construction material to create new floors.

Metal

SOLID customizes its maintenance based on your budget to keep the shine of your space.

SOLID handles any situation in any location, regardless of facility type, size, or traffic pattern. Our process, whether burnishing or re-polishing gives floors that "like-new" appearance with state-of-the-art and innovative coating and specialty products.

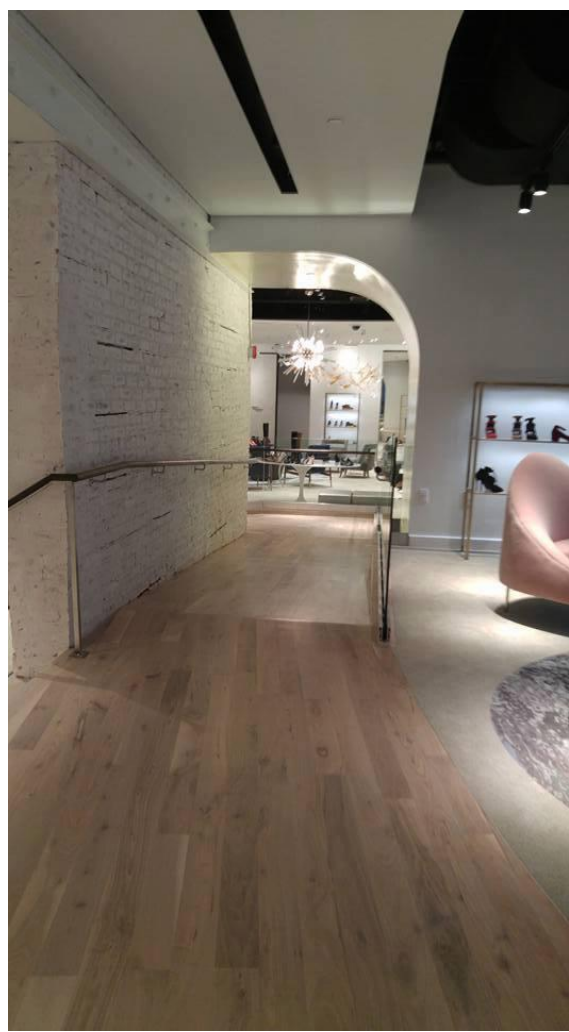
NEW PROJECT

Saks Fifth Avenue

Our hard surfaces team just completed preparing the Saks Fifth Avenue location in Greenwich, CT for its grand opening.

James McVoy took care of the white-washed walls and restoring the oak floor while the hard surfaces team handled the perimeter concrete floor. Congratulations on a job well done James! And we move on to the next project.





NEW PROJECT
New York Public Library

Once again our hard surfaces team did incredible work at the New York Public Library. The team cleaned and polished brass, copper and stainless steel. We couldn't be prouder of the results.



SOMETHING TO CONSIDER

Use Your Year End Budget Wisely

Get the most with what's left. Leave room for cleaning, sealing, and maintenance. Replace your entry mats to prepare for snow and salt, clean your upholstery, get rid of mold in the bathrooms and re-grout and re-seal that dirty tile. Your employees will be happy - and healthy.





NEW PRODUCT

New ASM Low Profile Wire Management Power Box



A great new addition to ASM's low profile management system. ASM's PowerLink plug and play connections for wiring not only save time and money, but allow for quick changes and flexibility over the life of the building.

ASM's PowerLink plug 'n play electrical distribution delivers ultimate technology-friendly advantages. fully integrated and interchangeable zone management of phone, data management and power systems

Engineered using a completely portable "zone" approach, ASM's low profile wire management system can be adapted and changed easily, and without disturbances to phones, computers and power to other users on the system. Office space can be expanded or modified quickly and conveniently - a huge cost savings over the life-cycle of a building.

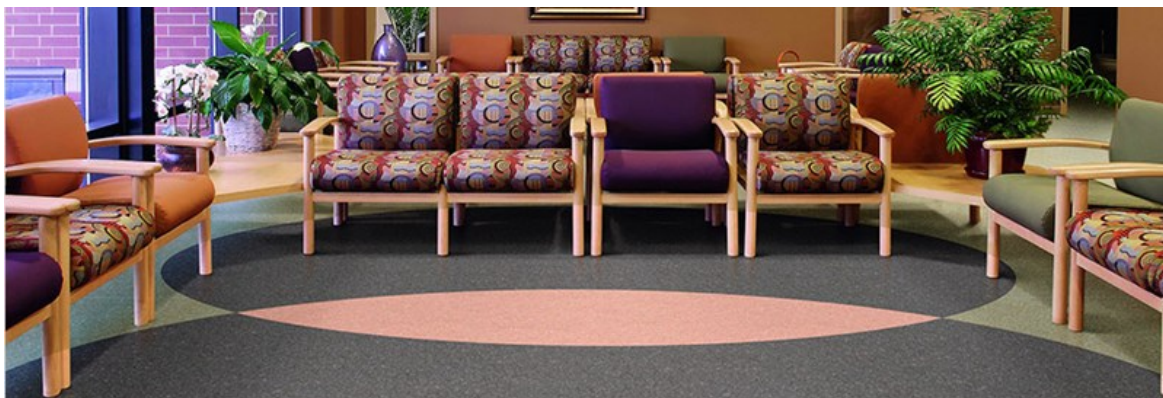
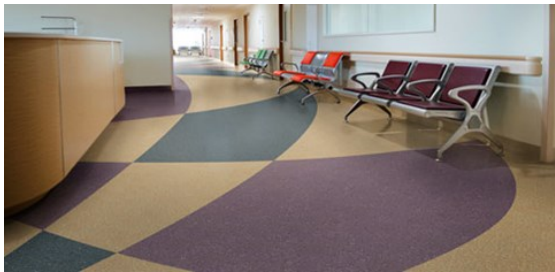
SAVE THE DATE

Adore Floors Party - Wednesday February 1, 2017

Join RD Weis and Adore Floors for a joint event and get a sneak peek at the latest offerings from this pioneer in the LVT market. More info to come!

ADORE® floors lines include Decoria, Naturelle, ProjectFlor and ProjectFlor Elite, each encompassing the highest standard of quality, innovation and performance. ADORE®

Floors are designed for use in both commercial and residential spaces. We're excited to offer this high-performance, resilient flooring.



WHO'S NEW AT RDW/CTS

Brittany Maiolo



Brittany joined RD Weis in 2016 as an A&D Sales Representative in the New York office, bringing invaluable experience in negotiation, strategy and sales. Prior to RD Weis, Brittany attended law school and worked as a paralegal on Long Island. She was a sales associate for a luxury women's brand retailer at its location at the Walt Whitman Shops where she was promoted to the highest non-supervisory position.

Brittany received her Juris Doctor degree from Hofstra University's Maurice A. Deane School of Law in Hempstead, NY and was a member of the Phi Alpha Delta Law Fraternity. She has a BA in English with a Minor in Political Science from Muhlenberg College in Allentown, PA.



THE RD WEIS COMPANIES CEU PROGRAM

Vinyl Flooring Uncovered

at

RD Weis Companies
150 West 30th Street
Suite 501
New York, NY 10001

Tuesday, December 13

Noon to 1:00pm

Lunch will be served

This course provides an overview of vinyl flooring and its manufacturing process, testing standards and performance characteristics. We will review and clarify the environmental impacts of vinyl flooring throughout its lifespan and explain how vinyl can help meet green building standards.

Participants will earn one CEU learning unit for AIA, IDCEC and USGBC.

CELEBRATING
Customer Appreciation Day

Recently we celebrated Customer Appreciation Day in honor of those long-standing partnerships that are such a loyal and integral part of RD Weis Companies.

Cocktails, hors d'oeuvres, and conversation marked the occasion that brought to the forefront those unending contributions that make our company what is today. Here are some pics of the party:





RD Weis Companies

New York, NY 212-376-5355
Westchester, NY 914-937-9337
Rochester, NY 585-334-8570
Albany, NY 914-426-2030

Hartford, CT 860-528-9637
Boston, MA 781-933-1085
Philadelphia, PA 800-444-6281

email: info@rdweis.com

web: www.rdweis.com

RD WEIS
COMPANIES
The Flooring Solutionists