

MESSAGE FROM MICHAEL CALLAGHAN



Michael Callaghan

2018 is CTS Flooring Group's 60th year in the flooring industry. How are we celebrating? We are preparing for growth!

Historically, CTSFG has concentrated on a more retail-centric business model. As part of our long term Strategic Plan, we are expanding our national presence into all segments of the commercial market, redefining our portfolio, enhancing our "best in class" Project Management Process, and strengthening our strategic alliances.

Our national accounts team is in full-swing with many multi-location customers. Replacing and installing carpet and LVT flooring, specifying and procuring materials for high-end franchises across the country that are going through refresh programs, and building partnerships to explore untapped opportunities.

CTS Flooring Group is poised to continue our years of superior project management, logistics, and service of national accounts.

Our team is excited about the future and look forward to a very productive summer.

Michael
President/CTS Flooring

NEW PROJECTS

JOHNNY JANOSIK WORLD OF FURNITURE FLOORING INSTALLATION
Brandywine Town Center in Wilmington, Delaware



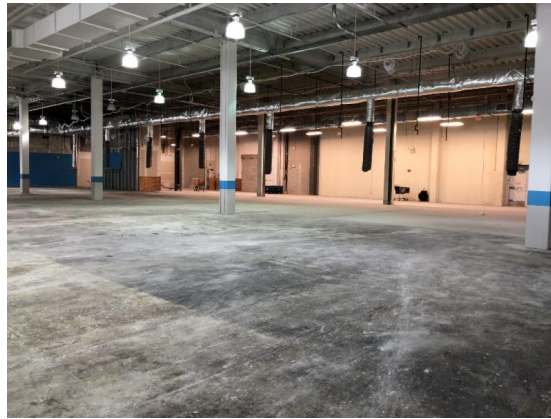
This space was a new build-out for a Johnny Janosik World of Furniture store at Brandywine Town Center in Wilmington, DE. It was an empty shell when we first arrived. This is the first flooring installation of two stores that we are doing jointly for Johnny Janosik Furniture, with hopefully more to come as they expand their operations across the Mid-Atlantic region.

The designer of this layout is Martin Roberts, an internationally known designer and the President of Martin Roberts Design, LLC, an award-winning team of retail consultants, architects, industrial, interior and graphic designers.

James McVoy, our Vice President of Corporate Sales/NY NY, provided the materials through RD Weis and CTS Flooring used one of our National Account Installation Crews to install all of the flooring. We used the following materials for the final product:

- Mannington Commercial - Spacia - Abstract - Mirus Cotton
- Mannington Commercial - Spacia - Abstract - Mirus Feather
- J & J Flooring Group - Tempo
- Bolyu - Commuter - Traffic Report
- Bolyu - Commuter - Stop & Go
- Bolyu - Luxury Vinyl Tile - Grey Ash (004)

See the dramatic change!



BEFORE



AFTER



TAKE A TOUR AROUND JOHNNY JANOSIK WORLD OF FURNITURE STORE

For more information [click here](#)

NEW PRODUCTS

LIQUID LINO FROM RD WEIS COMPANIES



Since the invention of linoleum 150 years ago, new technological advancements have been made using a blend of pure sustainable materials found in nature. Liquid Lino is a self-leveling, durable floor covering that matches all the original linoleum characteristics. It's available in 54 colors, which can be made to custom match.

This is resilient flooring that provides the freedom for choice of color and shape to personalize any environment.

Here are key features and benefits of Liquid Lino:

- Liquid applied resilient floor covering
- Fast Installation

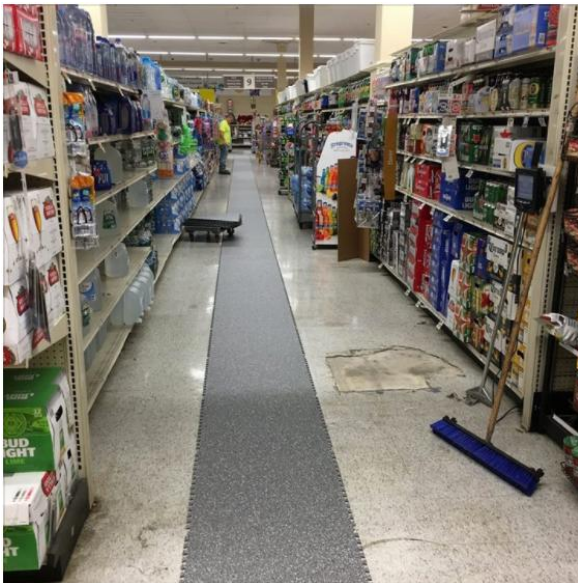
- Seamless - no heat welding needed, eliminating issues
- Easy to clean with minimal maintenanceFlexible and will not crack
- PVC Free - Zero VOCs
- Made using natural ingredients
- Watertight
- Comfortable underfoot, warmth
- Standard 54 colors
- Matte or Semi-Gloss Finish available
- Slip resistant standard R9, R-11 available

CALL US NOW - 1-888-RDWEIS9 OR EMAIL INFO@RDWEIS.COM

NEW PROJECT AND PRODUCT

GTI INSTALLATION AT STOP & SHOP, HOWARD BEACH, NY

RD Weis Companies installed GTI by Gerflor - Loose-lay interlocking tiles designed for heavy traffic environments that are quick to install and easy to maintain - at the Stop & Shop in Howard Beach, NY. Here are the before and after shots!



NEW PROJECT

RIVERDALE SCHOOL BASKETBALL COURT, THE BRONX, NY



A brand new Connor Sports floor in the Riverdale School basketball court, installed by RD Weis Companies!

NEW PEOPLE

MICHAEL CALLAGHAN



Michael comes to CTS with an extensive background in Executive Leadership, including sales and national/global accounts, most recently with Jaipur Living in Atlanta, where he was Vice President in charge of the firm's domestic and international sales, as well as shaping their long-term Strategic Planning. Prior to Jaipur, Michael spent 25 years with Milliken and Company in a series of sales and sales management roles where he had responsibility for the retail sales operations, corporate national accounts, International sales, and lastly was responsible for global accounts. Michael has a strong track record of opening up new channels of business and growing them well beyond

historic levels.

Michael is a graduate of Bowling Green State University in Bowling Green, Ohio.

CHARLIE DOHERTY



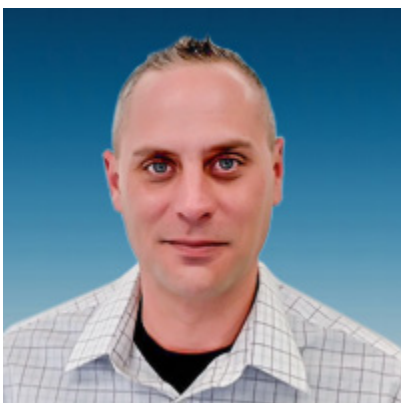
Charlie Doherty joined RD Weis as General Manager of RD Weis Sports Division in the Fall of 2017.

Charlie brings a distinguished 28-year career in the sports flooring industry and is known on the East Coast as the go-to person for large format jobs and has exceptional relationships with the major sports flooring providers. Charlie started his career at ABC Carpet as an installer of high-end products and in 1990, opened a labor workroom expanding into commercial with a focus on sports. He is a recognized pioneer in outdoor turf projects in the NYC area, California and Canada, and has deep

relationships with the variety of turf producers. Charlie has successfully partnered with Connor Sports, Shaw Sport turf, Mondo Gerflor Sport and Limonta Sport, to name a few. Prior to joining RD Weis, Charlie was the Sports GM with Consolidated Carpet in NYC.

As an amateur athlete, he was a first team All-American baseball player as well as a National Batting Champion and a Long Island player of the year. He is the community president of a non-profit sports program focused on bringing aspiration to all children with all types of abilities.

MICHAEL MERLO



Michael joined RD Weis in March 2018. He has 20 years in the flooring industry and started learning the business at a young age, gaining extensive experience in both residential and commercial flooring.

Prior to joining RD Weis, Michael was a sales representative for Bills Carpet and Furniture Center where he assisted customers with new flooring and carpet for their homes, performed in-home estimates and met and exceeded monthly quotas. As a sales representative for JJ Construction in Rochester, NY,

he completed sales and estimation for the residential remodeling company. He loves meeting new people and is always up for a challenge.

Michael has three children. His hobbies include golfing, bowling and boating.

JEFF MOTTLER

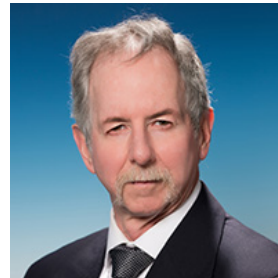


Jeff has over 15 years in the flooring industry, including 5 years Technical Service with RD Weis Companies as a carpet and hard surface technician, where he received the bulk of his floor care education. Prior to returning to RD Weis, Jeff worked as an account supervisor for a local facility service company, servicing 13 accounts for janitorial, carpet and hard surface care. When the opportunity arose to return to RD Weis, he wanted to take on the challenge and come back to the company he respected and where he felt most comfortable.

KEY ANNIVERSARIES



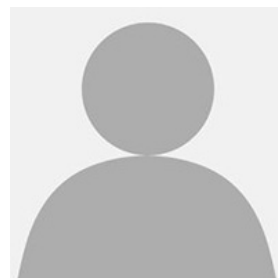
Kevin Quickle
Celebrates 20 years in June



Joseph Purcell
Celebrates 35 years in September



Peter Criscione
Celebrates 5 years in September



Alicia Schlachta
Celebrates 5 years in September

ARCHIVED NEWSLETTERS

CLICK HERE to access our newsletter archive.



RD Weis Companies

New York, NY 212-376-5355

Hartford, CT 860-528-9637

Westchester, NY 914-937-9337

Boston, MA 781-933-1085

Rochester, NY 585-334-8570

Philadelphia, PA 800-444-6281

Albany, NY 914- 426-2030

email: info@rdweis.com

web: www.rdweis.com



RD Weis Companies, New York Metro Area, 200 Clearbrook Road, Elmsford, NY 10523

[SafeUnsubscribe™ {recipient's email}](#)

[Forward this email](#) | [Update Profile](#) | [About our service provider](#)

Sent by contact@rdweis.com in collaboration with



Try it free today